

5th Annual Midwest Developmental Care Conference



ENGAGING FAMILIES IN THE NICU: THE HEART OF DEVELOPMENTAL CARE

Thursday, April 27, 2017

8am – 5pm

at

University of Illinois at Chicago Student Center West

Presented by the
Children's Hospital at the University of Illinois NIDCAP Training Center
and the
NIDCAP Training & Research Center at Cincinnati Children's

Optional session Friday morning: Meeting of the Illinois NICU Developmental Care Consortium



Course Information

Program Description

Recent research emphasizes the importance of the family and the quality of the parent-infant attachment to the infant's ultimate developmental outcome, yet the NICU can be an alienating and intimidating place for parents and families to negotiate. How we help parents truly parent their child in the NICU is a subject with which many hospitals struggle. This one day course will explore the biological and psychosocial factors that illustrate the necessity for family engagement as well as present implementation strategies to consider.

Program Details

Thursday's program will provide an overview of basic principles of infant mental health to provide context for the necessity and impact of family involvement in the NICU. Sessions will explore in depth the impact of skin to skin care from a biological, emotional and social perspective, and present recent research on the impact of the NICU on the mother-infant relationship. There will be presentation of various strategies to facilitate family engagement in the NICU also.

Friday's optional session (morning only) is open to all but geared towards NICU Professionals who support developmental care implementation on their unit. This is an opportunity to meet and learn more about the Illinois Developmental Care Consortium, a networking group dedicated to collaboration in order to expand knowledge and utilization of developmental care practices in Illinois. This meeting will also include an educational activity.

Course Objectives

- Using an infant mental health perspective, identify the challenges for families seeking to engage and attach with their infant who is hospitalized in the NICU.
- Discuss the role of oxytocin in emerging relationships, and how skin to skin care can promote attachment.
- Identify some barriers to implementing skin to skin care and choose strategies to promote skin to skin care in the NICU.
- Discuss how the hospitalization of a newborn changes how the mother's view of her infant is developed.
- Identify and analyze at least 3 strategies to help families engage with their infant.

Target Audience

RNs, Neonatal Nurse Practitioners, Occupational, Physical and Speech-Language Pathologists, Respiratory Therapists, Child Life Specialists, Infant Developmental Specialists, Early Intervention Providers, Social Workers, Family Support Specialists and NIDCAP Professionals who work with families who have an infant in a NICU.

Registration

Registration link: [MDCCChicago2017](https://appserv7.admin.uillinois.edu/FormBuilderSurvey/Survey/UIC_Hospital_Health_Sciences_System/nidcap/care_conference/) or copy and paste into your browser:

https://appserv7.admin.uillinois.edu/FormBuilderSurvey/Survey/UIC_Hospital_Health_Sciences_System/nidcap/care_conference/

Registration fee includes: Thursday's breakfast, lunch, snacks and program materials. Please register before April 20th.

\$125 General registration

\$100 UIC staff and Nursing student discounted registration

Hotel Accommodations

A limited number of rooms have been reserved Hotel Chicago www.hotelchicago1622.com conveniently located just blocks from UIC. Please contact the hotel by **March 25th** to secure the special rate of \$119+tax per night. This rate is available through the weekend as well!

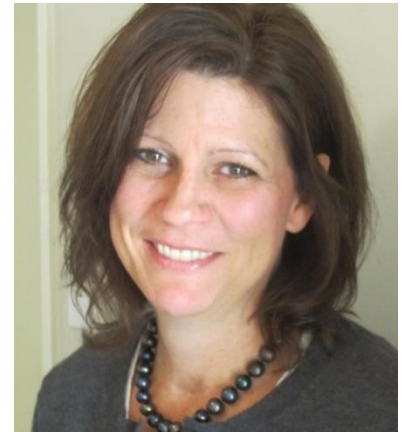
To receive this rate, contact the hotel directly by calling 312-243-2900 or emailing at

reservations@hotelchicago1622.com and let them know you are with the "Developmental Care Conference Group Block"

Course Information

Keynote Speakers

Dorothy Vittner , PhD, RN has 30 years experience in nursing. She received her Bachelors in Nursing at Western Connecticut State University, her Masters in Nursing Education at the University of Hartford, and her PhD in Nursing at the University of Connecticut. She is currently a consultant in the Division of Quality Management at the Connecticut Department of Developmental Services and previously was a developmental specialist and co-director of the NIDCAP Training Center at Connecticut Children's Medical center. Her years of working with infants and families led to her research interests in the biological and psychological effects of skin to skin care in the NICU.



Ilona Helin, PhD, CCC-SLP Is an assistant professor at Northern Illinois University in the College of Health and Human Sciences. She has her Bachelor and Master of Science degrees in Speech Language Pathology from Marquette University, and her doctorate in Child Development-Infant Mental Health from the Erikson Institute of Loyola University. She has 16 years of experience as a pediatric speech language pathologist working with infants, toddlers, and their families in a variety of settings including NICU and NICU follow up clinics. Dr. Helin became a NIDCAP Professional in 2006. Her research interests focus on mother-infant relationships in the context of the NICU.



Conference faculty

Jessica Bowen, MSW, LCSW , CIMI has worked as a NICU family support specialist for five years first with March of Dimes at Northwestern Medicine Prentice Women's Hospital and currently at Children's Hospital of University of Illinois..

Jennifer Hofherr, MS, OTR/L , C/NDT is the lead therapist for the NICU at Nationwide Children's Hospital. She has been a NIDCAP Trainer for the last 12 years.

Sue Horner, MS, APN/CNS, RNC-NIC is a nurse, developmental specialist and researcher at Ann and Robert H. Lurie Children's Hospital in Chicago.

Linda Lacina, MSN, RN is a developmental specialist and nurse educator at Cincinnati Children's Hospital and has been a NIDCAP Trainer for 10 years.

Jean Powlesland, MS, RN, is a developmental specialist at UI Health and has been a NIDCAP Trainer for 11 years.

Contact Hours

Continuing education for RN, OT, PT, RRT, Social Work and EI providers will be applied for. This course content is not intended for use by any participants outside the scope of their license or regulation. **Disclosures:** The planners and presenters have no real or perceived conflicts of interest that relate to this program. There is no commercial support/sponsorship for this program.

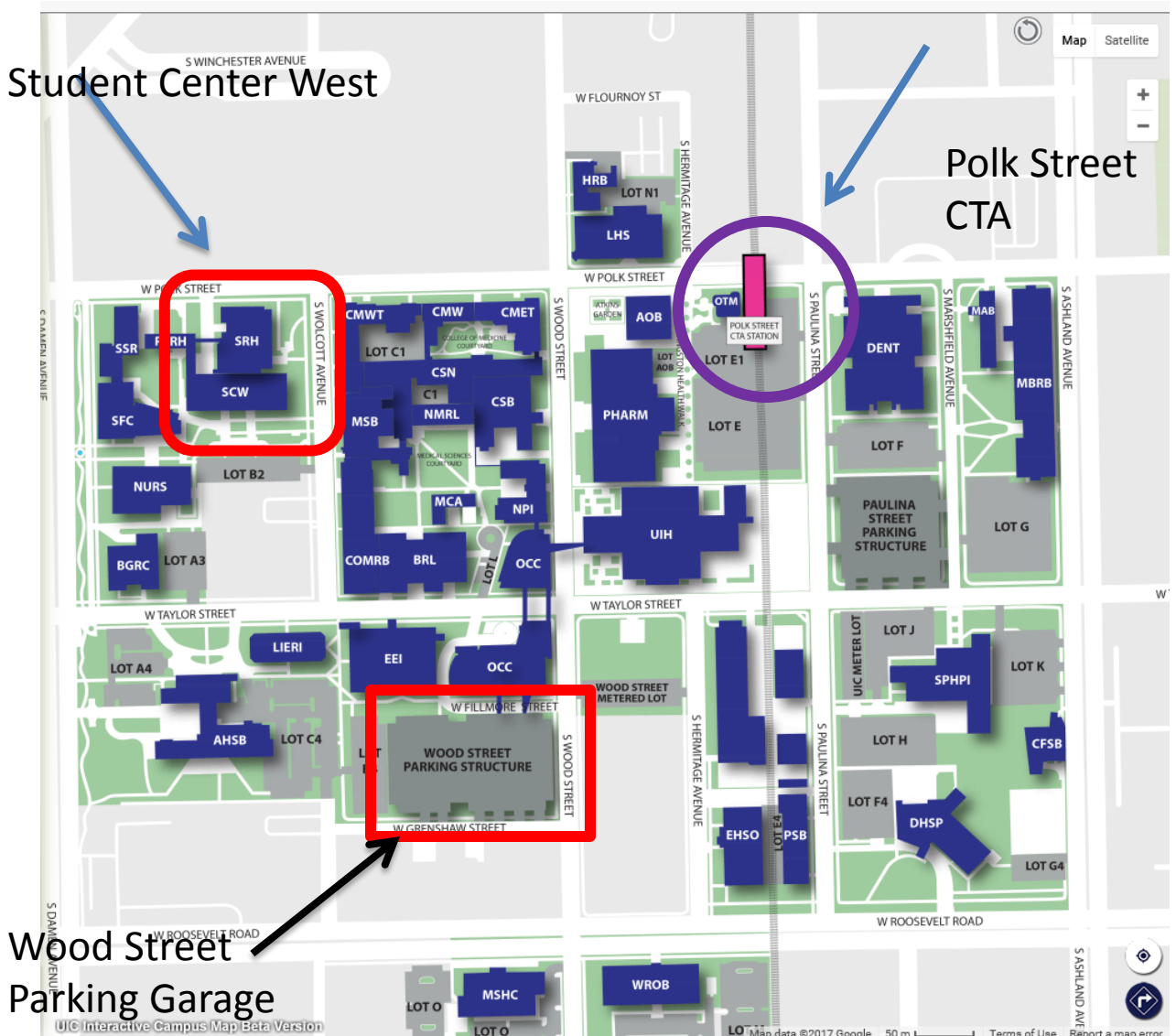
General Information

Location

The Thompson ballrooms are on the second story of the Student Center West, University of Illinois at Chicago. The address is 828 S. Wolcott Avenue Chicago, IL 60612.

Parking is available at the garage at Wood Street and Fillmore. Discounted parking sticker for \$7 will be available to purchase at the conference (cash only please).

The Student Center West is also two blocks from the Pink Line's Polk street station.



For general conference information please contact:
Jean Powlesland at jpowlesl@uic.edu or at 312 996 1747.

Program Agenda

Thursday April 27, 2017 (all day)

7:30-8:00 am	Registration and Light Breakfast
8:00-8:10	Welcome and Introduction
8:10-9:00	Principles of Infant Mental Health and their relation to the NICU Jessica Bowen, LCSW, NICU family support specialist
9:10-10:40	Oxytocin enhances developing relationships with skin-to-skin contact Dorothy Vittner, PhD, RN
10:40-11:10	Break and Vendor Exhibits
11:10-12:10	Practical applications implementing skin-to-skin contact Dorothy Vittner, PhD, RN
12:10-1:10 pm	Boxed Lunch and Vendor Exhibits
1:10-2:10	Mother-Infant Relationships in the NICU Ilona Helin, PhD, CCC-SLP
2:10-3:30	Strategies to support family engagement: Sue Horner, Lurie Children Hospital Jennifer Hofherr, Nationwide Children's Hospital Jessica Bowen, Children's Hospital University of Illinois
3:30-4:00	Break and Vendor Exhibits
4:00-4:50	"Putting it all together" Reflection on facilitating family engagement Linda Lacina, Cincinnati Children's Hospital Jean Powlesland, Children's Hospital University of Illinois Jennifer Hofherr, Nationwide Children's Hospital
4:50-5:00	Evaluation

Friday April 28, 2017 (optional)

Intended for NICU Staff who work in Developmental Care to meet the Illinois NICU Developmental Care Consortium

8:00-8:30	Meet and greet with the Illinois Developmental Care Consortium (light breakfast provided)
8:30-11:30	Meeting of the IDCC Including Educational Activity