

# NICU Journey Beads Color Guide



## **NICU Knowledge Bead:**

Read and signed parent partnership agreement



## **Prematurity Ribbon:**

Less than 37 weeks at birth



## **Carriage Bead:** Watched CPR/Discharge Video



## **Bottle Bead:**

First time Mom or Dad fed baby a bottle



## **Kangaroo Bead:** First time Mom or Dad held baby skin-to-skin



## **Safety Pin Bead:** First time Mom or Dad changed baby's diaper



## **Camera Bead:**

Attended PAGES Scrapbooking group



## **Pumping Beads:**

One bead for every two weeks of pumping



## **Butterfly Remembrance Bead:**

In honor of the loss of a brother or sister



Light Blue: IV Discontinued



Gold: Colostrum/  
Pumping Bead



Clear: Open Crib



Silver: First bath



Red: Surgery



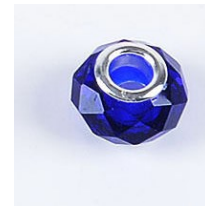
Yellow: Phototherapy  
for Jaundice



Green: First time baby  
wore clothes



Pink: First time to  
breast



Dark Blue: Weaned down  
or off Respiratory support



Purple: Prematurity (Less  
than 37 weeks at birth)



Light Green: First time  
read to baby at bedside



Brown: Transported  
from another Hospital



Blue: Stayed for 1 day  
up to 3 weeks



Red: Stayed 1 month



Onyx: Stayed 2+  
months